



Donaldson Delivers

# Fuel Filtration

for Cummins® ISX Engines

## THE CLEANEST FUEL. PERIOD.



Donaldson.  
**BLUE™**

Cummins® is a registered trademarks of Cummins, Inc.

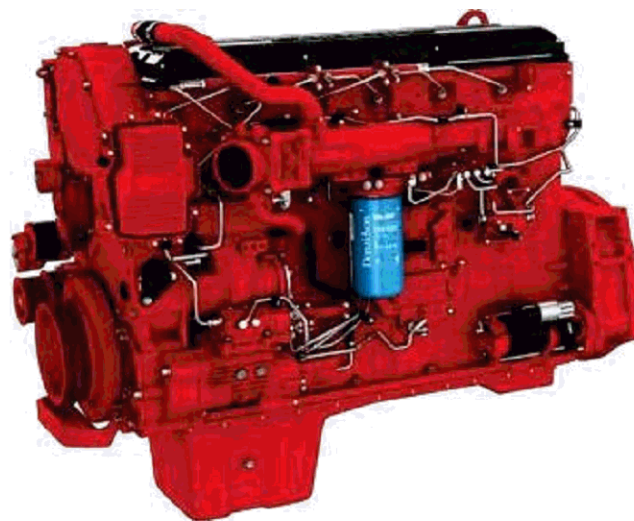
# GET THE CLEANEST FUEL – Donaldson Blue® Fuel Filters Outperform

Getting the cleanest fuel possible to the injectors on your Cummins® ISX engines is an absolute priority. It uses a high pressure common rail (HPCR) fuel system that operates in a demanding environment that includes vibration, fuel pump pulsation and surging fuel flows. Any contamination – even the smallest particles – can do significant damage to your injectors and other fuel system components, which can result in reduced fuel economy, expensive injector repairs and unplanned downtime.



Your on-engine fuel filters are your last line of defense against damaging contaminants. It's more critical than ever before that today's fuel filters **remove and retain** as much contaminant as possible from the fuel supply.

**Donaldson Blue** filters with Synteq XP™ nanofiber media offer best-in-class contaminant capture and containment. Tests have proven that they deliver fuel that is **four times cleaner** than competitor's best filters. Clean fuel minimizes expensive repairs and unplanned downtime – it's better for HPCR fuel systems.

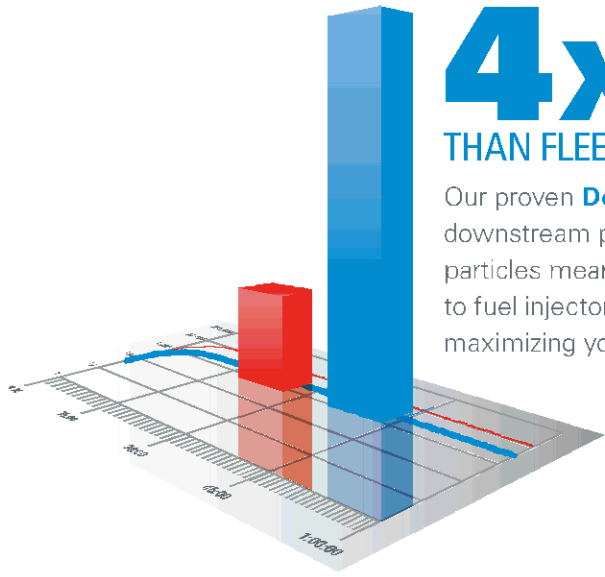


*DBF5811 for 15.0 liter engines and  
DBF6776 for 11.9 liter engines*

- **Best capture** and **retention** of injector damaging contaminants
- **Best performance** in heavy-duty environments (inferior filters can "slough" contaminant during engine vibration)
- **Best** available fuel filtration **media** – Synteq XP™ technology
- **Best protection** for today's sophisticated HPCR injectors

**Donaldson Blue® Fuel Filters  
Deliver the Cleanest Fuel – Period.**

# THE PROOF IS IN THE PERFORMANCE – Donaldson Blue® Fuel Filters Outperform



**4x** cleaner fuel  
THAN FLEETGUARD® NANONET® FILTERS

Our proven **Donaldson Blue** fuel filters average four times fewer downstream particles than Fleetguard NanoNet® filters. Fewer particles means less contaminants are flowing downstream to fuel injectors – protecting your hard-working engines and maximizing your uptime.

## INDUSTRY-SHAPING SYNTEQ XP™ MEDIA TECHNOLOGY

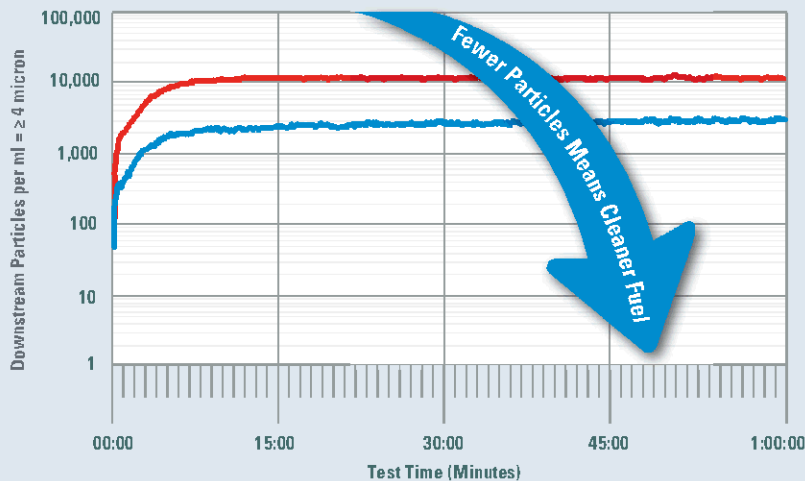
**Donaldson Blue** fuel filters use proprietary Synteq XP nanofiber media. Synteq XP media uses fine fibers with resin-free fiber bonding which allows the filters to do what filters are intended to do – remove and retain more injector-damaging contaminant.



## Contaminant Removal Efficiency Under Vibration

### DOWNSTREAM PARTICLES

Particle retention was tested under SAE J1985 single-pass test standards with added vibration to replicate conditions your trucks see every day.



### Fleetguard® NanoNet® FF5811

### Donaldson Blue® DBF5811

offers better filtration efficiency than the FF5811 filter. Better efficiency means four times fewer harmful particles make it downstream to your engine.

**Donaldson**  
**BLUE**

# Donaldson Filtration Products for Cummins® ISX Engines



Donaldson Part No.	Cummins	Fleetguard
<b>Primary Fuel Filtration</b>		
 <b>P552203</b> • Efficiency: 95% @ 140µm	4010476	FF2203
<b>Secondary Fuel Filtration</b>		
 <b>DBF5811 (15.0L)</b> 2010 Engines and Newer • Efficiency: 99% @ 4µm	N/A	FF5811
 <b>DBF6776 (11.9L)</b> 2010 Engines and Newer • Efficiency: 99% @ 4µm	N/A	N/A
 <b>P555686 (15.0L)</b> 2010 Engines and Newer • Efficiency: 99% @ 5µm	3685306	FF5686
 <b>P555776 (11.9L)</b> 2010 Engines and Newer • Efficiency: 99% @ 5µm	2893612	FF5776
 <b>P552200</b> Pre-2010 Engines • Efficiency: 99% @ 8µm	4088272	FF2200
<b>Lube Filtration</b>		
 <b>P550949</b> OEM Efficiency • Efficiency: 87% @ 15µm >99% @ 30µm	2882674	LF14000N
 <b>P559000</b> High Efficiency • Efficiency: 98% @ 15µm >99% @ 30µm		
 <b>DBL7900</b> High Efficiency, Long-Life Seals • Efficiency: 98% @ 15µm >99% @ 30µm	4906633	
<b>Coolant Filtration</b>		
 <b>P550866</b> SCA+ 8 Units • Efficiency: 99% @ 50µm	4907485	WF2126
 <b>P550867</b> Non-chemical • Efficiency: 99% @ 50µm	3680434	WF2127



## You Have A Choice

You can always choose top-quality Donaldson filters designed specifically for your engines and equipment and – as long as you change them according to the engine manufacturer’s maintenance schedule – using Donaldson filters will not void your engine manufacturer’s warranty.

